



www. bpginc.info

PO Box 75
Bassendean WA 6934
Australia

Mr Simon Stewert-Dawkins
Director of Operational Services
Town of Bassendean
48 Old Perth Road
Bassendean 6054

Dear Simon,

**BPG 2009 Planting Program: Ashfield Flats, Bindaring and Jubilee –
Proposed Plant Species and Planting Areas**

BPG has committed to another ambitious planting year, "Planting 2009 Trees in 2009". Once again we ask for your help in ensuring this year's program is a success.

Table 2 illustrates the current state of BPG's propagation program. Numbers are down somewhat because of the low propagation success rate of some of the species this year.

The columns in Table 2 correspond to the areas depicted on the maps in Figures 1 to 3. The originals of these maps are in MS Visio. You'll notice a row of text boxes along the bottom of each map. In the Visio original these are programmed using Visual Basic to act as "radio" buttons to select the named year's area of works. The selected year button turns green. I developed this tool in anticipation that it would be useful in creating and documenting a 3 to 5 year plan working with your staff.

A brief description of the works proposed for 2009 follows:

Fairford Street Drain (No map is provided for this site)

Revegetation was initially undertaken funded by a National Heritage Trust Project from 1996/97, with Bayswater Integrated Catchment Group, Water Corp and Cyril Jackson participating. Many of the plants are thriving but weeds are intruding and there is evidence of indifferent mowing that has damaged natives. BPG spoke to Water Corp who offered to assist BPG providing weed control, with BPG providing revegetation.

This is a minor project on Water Corp controlled land that will not require any assistance from ToFB.

Broadway Arboretum (No map provided, the same site as last year)

BPG has committed to participating in the Alcoa sponsored Dieback Resist Jarrah program again this year. BPG could return to Broadway, but another dry summer will result in another 99% fatality outcome (refer to the Report on BPG’s DRJ Planting for 2008).

Further discussion is sought with TofB in regards to arrangements for hand watering, temporary irrigation, or use of an alternative method such as DriWater to get the plants through the first year’s summer months.

Bindaring Park (Figure 1)

The planting will be for infill to the area created by the relocation of the bark chip pathway away from the wetlands.

Ashfield Flats (Figure 2)

The plantings proposed are infill and reinforcement of areas planted in previous years. Weed control is essential at Ashfield Flats. BPG has learned through experience that without effective weed control the natives cannot compete in the first critical year. It is proposed BPG and TofB meet on site to discuss options and areas for weed control.

Last year BPG coordinated the Ashfield Flat works with Kevin Bryant at DPI. This year, it appears a permit may also be required from the Swan River Trust, being Form 7 – Application for Permit Swan and Canning Rivers Management Regulations 2007 - Part 4 Permits.

BPG would like to discuss with TofB whether this form is necessary, and if so who will complete it, or whether TofB and BPG will have to complete separate forms for their works.

Jubilee Reserve (Figure 3)

Last year the Eden Hill Primary School students planted at Bindaring Park. This year the species selected for their school project are typical of Bassendean Sands. Jubilee is proposed as it is Bassendean Sands soil type, convenient to EHPS, has toilets, and is free of Caltrop.

BPG’s proposed planting schedule is depicted in Table 1.

Date	Location
14-June-09	Fairford Street Drain and Broadway Arboretum DRJs
16-June-09	EHPS Project at Jubilee
28-June-09	Ashfield Flats, first half
12-July-09	Bindaring Park
26-July-09	Ashfield Flats, second half

Table 1 - Proposed Planting Days (subject to approvals. And rain!)

Thank you again for your assistance and support in these efforts. I would like to emphasize that these are proposals at this point and I look forward to finalizing the details with Leah and Mark.

Yours sincerely,

A handwritten signature in blue ink, appearing to read "Steve McFarland", with a long horizontal flourish extending to the right.

Steve McFarland
Secretary, Bassendean Preservation Group Inc.
Work: 9326 6950 Mob: 0421 355 454

3 May 2009

cc: Kevin Byrant at DPI

	TotB lis	Proposed BPG Planting						EHPS Project Jubilee	notes
		Fairford St Drain	Broadway Arboretum	Bindaring Area g.	Ashfield Flats Area a. Area b. Area e.				
Upper Storey									
Allocasuarina fraseriana (Common Sheoak)	✓			75				75	40
Banksia attenuata (Candle Banksia)	✓								planted heaps in 2008 @ Broadway
Causuarina obesa (Salt Sheoak)	✓								0 propagated out of 225
Corymbia calophylla (Marri)	✓			25		75		100	45
Eucalyptus marginata (Jarrah)	?		100					100	20 Broadway Jarrahs are DRJs from Alcoa
Eucalyptus todtiana (Prickly Bark)	✓								3 3 propagated out of 115. Replace with Jarrah.
Eucalyptus rudis (Flooded Gum)	✓			25	25		50	100	
Melaleuca preissiana (Stout Paperbark)					25			25	may be too small to plant
Melaleuca raphiophylla (Swamp Paperbark)	✓			75	125	25	100	325	
Middle Storey									
Acacia dentifera		5					40	45	45 propagated out of 50
Acacia pulchella (Prickly Moses)		5		45		25		75	
Acacia saligna (Golden Wreath Wattle)	✓								
Beaufortia elegans (Elegant Beaufortia)	✓								0 propagated out of 75
Kunzea ericifolia (Spearwood)									0 propagated out of 5
Melaleuca lateritia (Robin Red Breast)	✓	5		25	10	35	10	85	about 85 propagated out of 175
Melaleuca viminea (Mohan)					200	75	150	425	
Oxylobium lineare (Swan River Pea)									couldn't get seed
Viminerea juncea (Swish Bush)	✓					50	50	100	about 100 have propagated out of 125
Under Storey									
Acacia huegelii									couldn't get seed
Bossiaea eriocarpa (Common Brown Pea)	✓								none propagated out of 5
Dampiera linearas (Common Dampiera)	✓								couldn't get seed
Gompholobium tomentosum (Hairy Yellow Pea)	✓	5		20				25	25 propagated out of 50
Hakea prostrata (Harsh Hakea)						50		50	
Hardenbergia comptoniana (Native Wisteria)	✓								seed from Steve's yard
Hemiandra pungens (Snake Bush)									12 propagated out of 50
Hypocalymma angustifolium (White Myrtle)	✓	5				7		12	about 12 out of 50 propagated.
Hypocalymma robustum (Swan River Myrtle)		1						1	about 1 out of 5 propagated.
Juncus pallidus (Giant Rush)	✓	10				15		25	about 25 out of 100 propagated.
Kennedia prostrata (Running Postman)	✓	5		20				25	
Lobelia alata (Angled Lobelia)	✓								a bit exy? Didn't buy.
Totals		41	100	310	385	357	400	1593	108 need to top up EHPS to the committed 125
					grand total all projects:				1701

Table 2 - BPG's Propagated plants to date and proposed locations

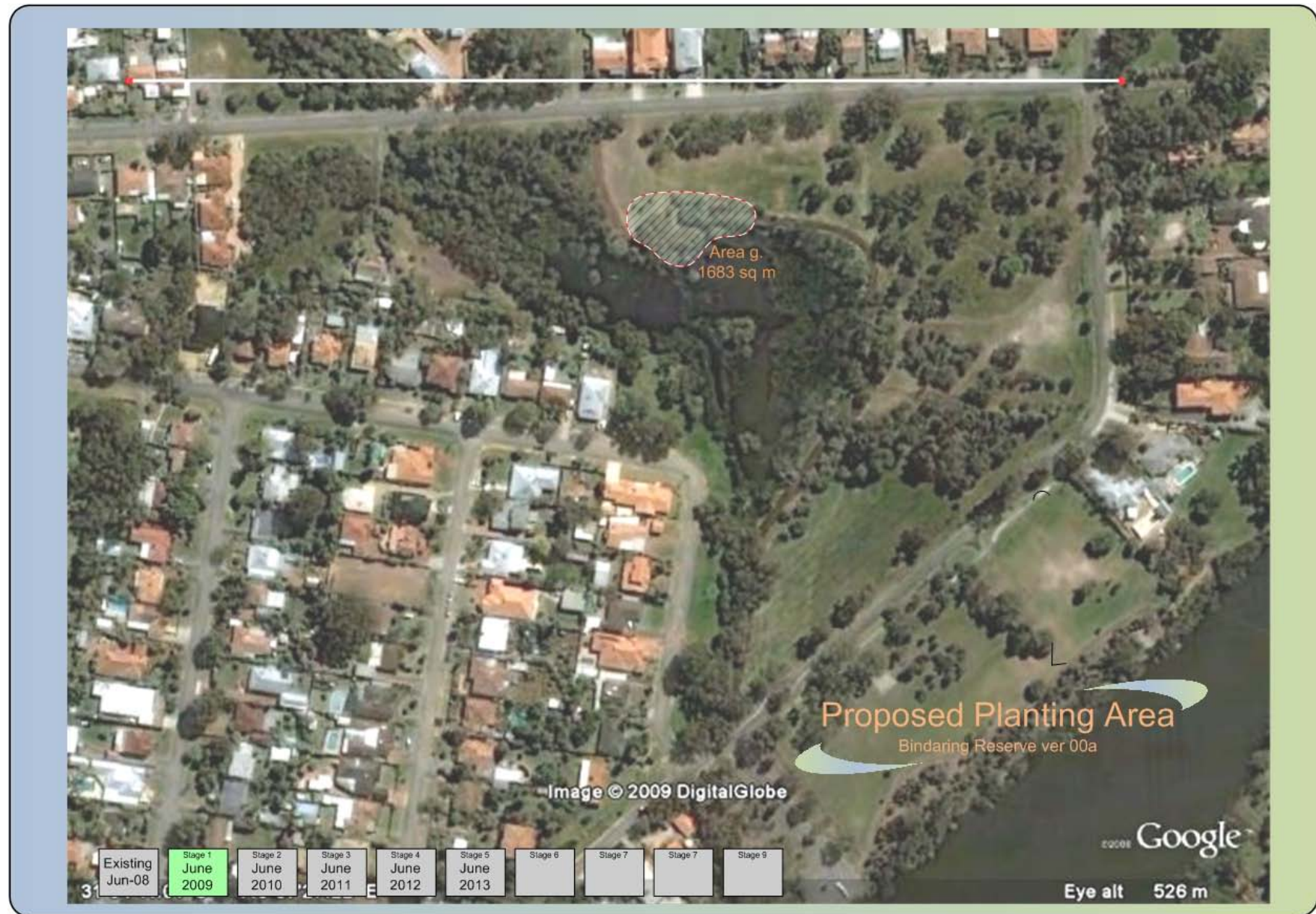


Figure 1 - Location of plantings at Bindaring for 2009



Figure 2 - Location of planting at Ashfield Flats for 2009



Figure 3 - Location of Eden Hill Primary School Project Planting for 2009